

TRACK THE PERFORMANCE OF YOUR INDUSTRIAL OVENS, ENVIRONMENTAL CHAMBERS, TEST CHAMBERS, CURING OVENS, STERILIZERS AND DRYERS *FROM ANYWHERE*



PERFORMANCE MONITORING SYSTEM

WORKS WITH NEW AND EXISTING MODBUS COMMUNICATION

MachinePulse Features Include:

- Data monitoring
- Alarm services
- Customized dashboard access
- Virtual health checks

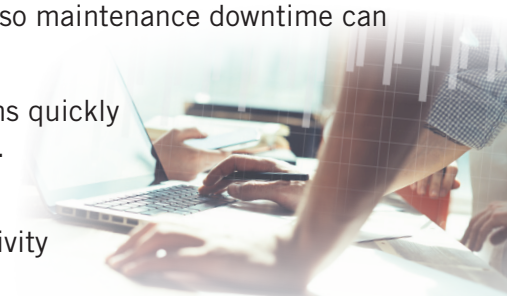
PREDICT POTENTIAL FAILURE - Predict component failures and take preventative measures prior to the failure occurring.

REDUCE DOWNTIME - Through continuous monitoring of the equipment operation, component failures can be diagnosed and corrected quickly.

PLAN MAINTENANCE - Preempts equipment failures so maintenance downtime can be scheduled.

DIAGNOSE REMOTELY - Diagnose equipment problems quickly without waiting for a service technician to be scheduled.

INCREASE PRODUCTIVITY & PROFITABILITY - Minimize unplanned downtime to maximize the productivity of the equipment and increase profitability.



WHAT IS MONITORED?

The MachinePulse system **continuously records important data points** to make sure your equipment is running at peak performance levels.



The MachinePulse Gateway works with the existing controller to monitor strategic areas of your equipment.

FEATURES

Continuous monitoring - The MachinePulse constantly monitors the system and provides notifications when anomalies are detected.

Dashboards are used to display the data being collected, as well as any alarm conditions – Accessible via an internet browser – Available to the customer as a premium option.

Data storage - After being collected, the data points are accumulated and stored for analysis at any time via the dashboard.

SYSTEM SECURITY

The MachinePulse system **only collects data**, and cannot affect the equipment operation, nor turn the equipment off or on. In the unlikely event of an interruption of the MachinePulse system, the equipment will remain operational.

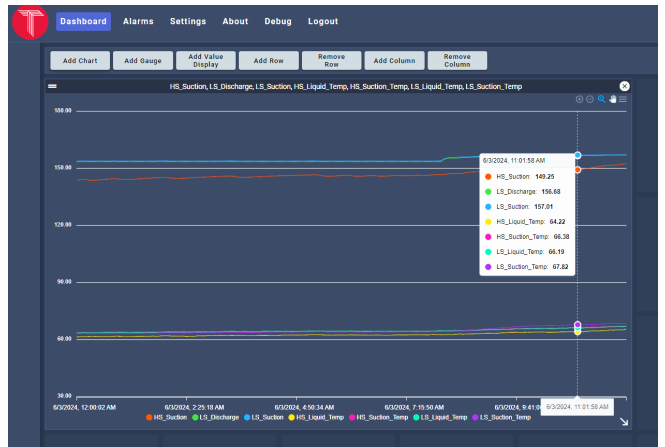
*****Coming soon:** Encrypted cellular technology that connects automatically upon equipment power-up and allowing remote data collection and process control.

EQUIPMENT RETROFITS

Retrofit packages are available for most equipment with ModBus TCP communication port.



Scan to watch the MachinePulse in action:



Register List

Register Label	Register Number	Type	Min/Max Value	Min/Max Value	Units	Scale Operator	Scale Factor	In Alarm	Delete
Channel1_Pressure	100	Analog	0	1000	PSI	1	1	<input checked="" type="checkbox"/>	<input type="checkbox"/>
Channel2_Pressure	101	Analog	0	1000	PSI	1	1	<input checked="" type="checkbox"/>	<input type="checkbox"/>
Channel3_Pressure	102	Analog	0	1000	PSI	1	1	<input checked="" type="checkbox"/>	<input type="checkbox"/>
Channel4_Pressure	103	Analog	0	1000	PSI	1	1	<input checked="" type="checkbox"/>	<input type="checkbox"/>
Channel5_Pressure	104	Analog	0	1000	PSI	1	1	<input checked="" type="checkbox"/>	<input type="checkbox"/>
Channel6_Pressure	105	Analog	0	1000	PSI	1	1	<input checked="" type="checkbox"/>	<input type="checkbox"/>

Alarm History

Status	Alarm Name	Message	Acknowledge
●	High Channel 1 Set Point	Channel1_Setpoint > 75	<input type="checkbox"/>
●	Low Channel 2 Set Point	Channel2_Setpoint < 50	<input type="checkbox"/>
●	Temperature at 30C	Channel3_Pressure > 30	<input type="checkbox"/>

www.thermalproductsolutions.com
 »Blue M »Gruenberg »Lindberg/MPH »Lunaire
 »Redline Chambers »Tenney »Wisconsin Oven

Easily Configurable Dashboards with user-friendly interfaces for process and alarm monitoring.